

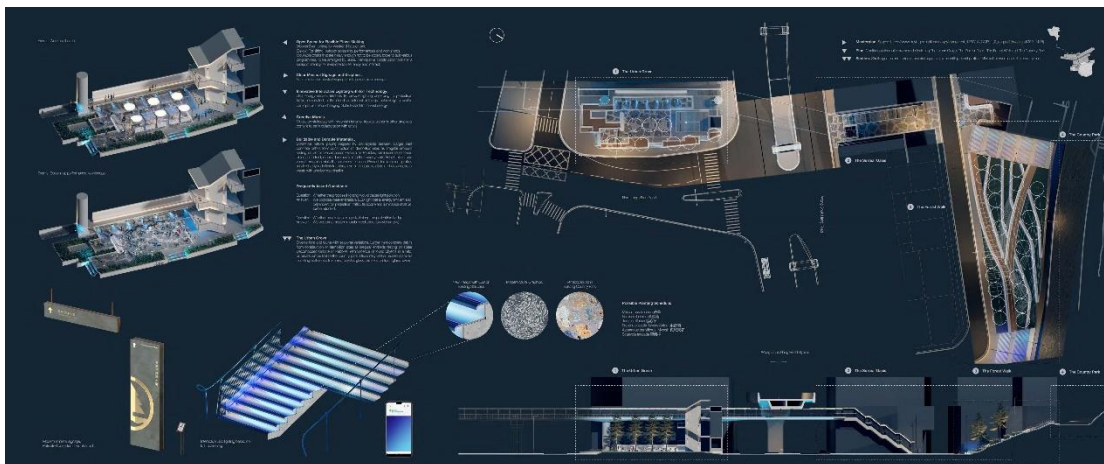
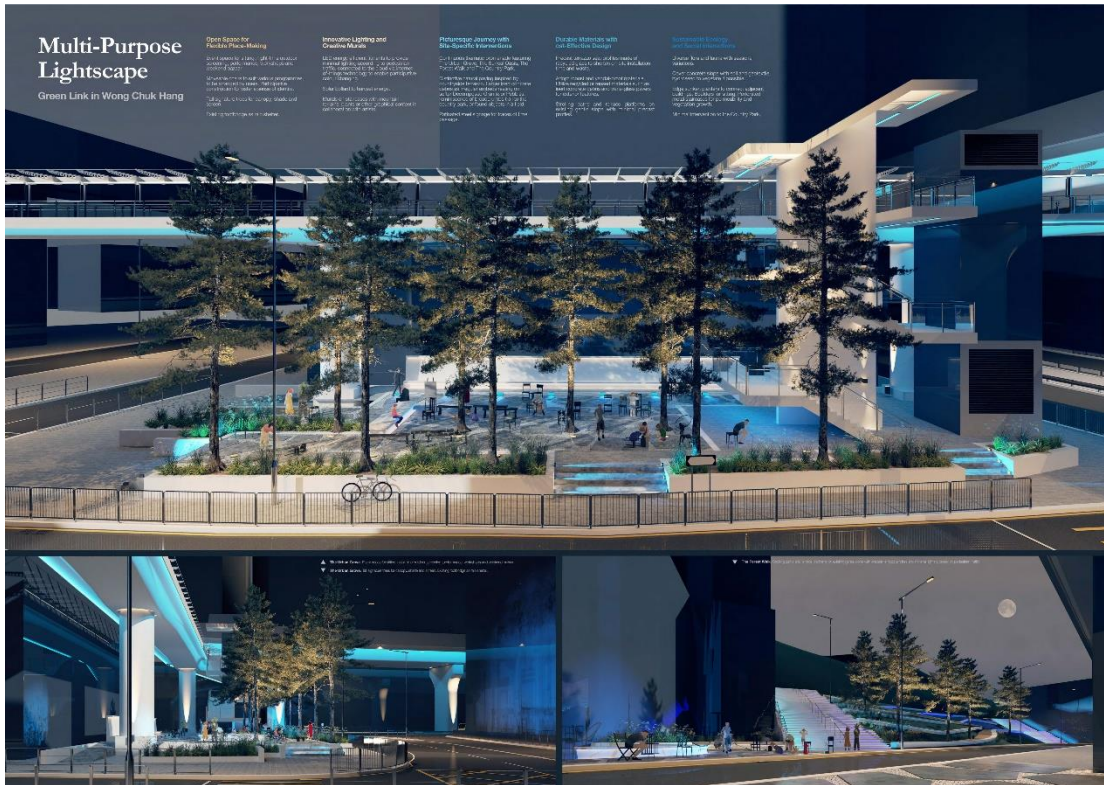
Award Announcement

Award	Confidential Registration Number	Title	Team Leader	Team Member(s)
First Prize	504075	Green Link Wong Chuk Hang	Liu Xiao Ran	Chan Chui Sze Tracy Ho Sze Ki Claudia Boonwipa Wongsas Tanitha Thamahapoth Liu Kwok On
Second Prize	316184	Multi-Purpose Lightscape	Chau Lok Kan	Wong Lok Wai, Lance
Third Prize	367941	Green Emergence	Lui Sheung Ching	Cheng Chun
Merit Entries <i>(in order of Confidential Registration Number)</i>				
	561059	Trangramatic Green-Link	Ma Vickie Ka Ki	So Ho Lung Cho Hing Nathan
	780213	竹・連	Tsui Wing Fai Tony	Leung Wan Fei Hong Yan Yee
	888876	Wong Chuk Commons	Benjamin James Macleod	Christine Leu Chris Yee Jenny Yeung Jeffrey Cheng Brother William Ng

First Prize Green Link Wong Chuk Hang



Second Prize Multi-Purpose Lightscape



Third Prize Green Emergence



GREEN EMERGENCE
DESIGN COMPETITION ON GREEN LINK IN WONG CHUK HANG



Merit Entry Transramatic Green-Link



THE TRANSRAMATIC GREEN-LINK
IN HONG KONG

The word "transramatic" is a portmanteau of "transram" (a seven-piece puzzle game) and suffix "atic" forming a new adjective to symbolize the cross-medium and cross-media of the past and present in the role of the Wong Chuk Hang.

1. MODULAR DESIGN
2. FLEXIBLE DISASSEMBLY SYSTEMS
3. REMAINING PEDESTRIAN EXPERIENCE

SITE 1 - IMPROVEMENT WORKS TO NAM LONG SHAN SITTING-OUT AREA
The design aims to improve the pedestrian experience with public furniture, integrated walkways, and enhanced recreational landscape spaces between urban and rural building areas. The materials provide multifunctional features, serving as a supporting system, light fixing plant, lighting, and water pipe system for microclimate control and other related features.

SITE 4 - CONDITION 1 - ENTRANCE POINT
The design path is based on iron and metal materials which follow the minimalist approach. Site 4 is a key element of the Transramatic Green-Link which links up the 24-storey sitting spaces of the Southern Ridge - connecting of the Kai Street, Southern Hill and Aberdeen New Town - so form an interlinked network of bridges for the public to enjoy convenient access to nature.

SITE 4 - CONDITION 2 - PLATFORM INTEGRATED WITH EXISTING TERRACE AT LEVEL
The design path is based on iron and metal materials which follow the minimalist approach. Site 4 is a key element of the Transramatic Green-Link which links up the 24-storey sitting spaces of the Southern Ridge - connecting of the Kai Street, Southern Hill and Aberdeen New Town - so form an interlinked network of bridges for the public to enjoy convenient access to nature.

OVERALL DESIGN STRATEGY

MODULAR PLANTERS

MODULAR SEATING BENCHES

MODULAR PAVILION DESIGN

LANDSCAPE FURNITURE

PAVING STANDARDS

SITE 5: CONNECTION TO HILL SLOPE AND FOOTPATH AT YIP HING STREET

HONG KONG TRAIL LOCATION PLAN

MODULAR METAL DECK

TRANSRAMATIC HIKING TRAIL - TYPOLOGIES

1. Entrance point
2. Both sides of slope in more than 45 degree will be provided on both sides
3. One side of slope in more than 45 degree will be provided on the slope side
4. Hybrid of walk with and without handrail
5. Traditional Trail with slope in less than 45 degree will be provided based on safety concern
6. Platform integrated with existing area at the level

SITE 1 - IMPROVEMENT WORKS TO NAM LONG SHAN SITTING-OUT AREA

The design proposes to replace the existing planter wall and steps along the boundary of the site. The design aims to improve the pedestrian experience with public furniture, integrated walkways, and enhanced recreational landscape spaces between urban and rural building areas. The materials provide multifunctional features, serving as a supporting system, light fixing plant, lighting, and water pipe system for microclimate control and other related features.

SITE 2 - FACE LIFTING OF ALLEY BETWEEN YI AND WONG CHUK HANG ROAD

FLEXIBLE USE OF EVENT SPACE SEATING AREA

WORKING CONCEPT

- 1. IMPROVE THE PEDESTRIAN EXPERIENCE WITH PUBLIC FURNITURE, INTEGRATED WALKWAYS, AND ENHANCED RECREATIONAL LANDSCAPE SPACES BETWEEN URBAN AND RURAL BUILDING AREAS.
- 2. THE DESIGN PATH IS BASED ON IRON AND METAL MATERIALS WHICH FOLLOW THE MINIMALIST APPROACH.
- 3. THE TRANSRAMATIC GREEN-LINK WHICH LINKS UP THE 24-STOREY SITTING SPACES OF THE SOUTHERN RIDGE - CONNECTING OF THE KAI STREET, SOUTHERN HILL AND ABERDEEN NEW TOWN - SO FORM AN INTERLINKED NETWORK OF BRIDGES FOR THE PUBLIC TO ENJOY CONVENIENT ACCESS TO NATURE.

SITE 3 - ENHANCEMENT WORKS TO SITTING-OUT AREA AT YIP HING STREET AND ADJOINING STAIRCASE

The design aims to improve the pedestrian experience with public furniture, integrated walkways, and enhanced recreational landscape spaces between urban and rural building areas. The materials provide multifunctional features, serving as a supporting system, light fixing plant, lighting, and water pipe system for microclimate control and other related features.

SITE 4 - PROPOSED NEW SITTING-OUT AREA ON GRADE AT YIP HING STREET AND ADJOINING STAIRCASE

The design aims to improve the pedestrian experience with public furniture, integrated walkways, and enhanced recreational landscape spaces between urban and rural building areas. The materials provide multifunctional features, serving as a supporting system, light fixing plant, lighting, and water pipe system for microclimate control and other related features.

METAL TUBE INSTALLATION & DESIGN INTENT

DESIGN CONCEPT

- 1. IMPROVE THE PEDESTRIAN EXPERIENCE WITH PUBLIC FURNITURE, INTEGRATED WALKWAYS, AND ENHANCED RECREATIONAL LANDSCAPE SPACES BETWEEN URBAN AND RURAL BUILDING AREAS.
- 2. THE DESIGN PATH IS BASED ON IRON AND METAL MATERIALS WHICH FOLLOW THE MINIMALIST APPROACH.
- 3. THE TRANSRAMATIC GREEN-LINK WHICH LINKS UP THE 24-STOREY SITTING SPACES OF THE SOUTHERN RIDGE - CONNECTING OF THE KAI STREET, SOUTHERN HILL AND ABERDEEN NEW TOWN - SO FORM AN INTERLINKED NETWORK OF BRIDGES FOR THE PUBLIC TO ENJOY CONVENIENT ACCESS TO NATURE.

SITE 1 - IMPROVEMENT WORKS TO NAM LONG SHAN SITTING-OUT AREA

The design proposes to replace the existing planter wall and steps along the boundary of the site. The design aims to improve the pedestrian experience with public furniture, integrated walkways, and enhanced recreational landscape spaces between urban and rural building areas. The materials provide multifunctional features, serving as a supporting system, light fixing plant, lighting, and water pipe system for microclimate control and other related features.

SITE 3 - ENHANCEMENT WORKS TO SITTING-OUT AREA AT YIP HING STREET AND ADJOINING STAIRCASE

The design aims to improve the pedestrian experience with public furniture, integrated walkways, and enhanced recreational landscape spaces between urban and rural building areas. The materials provide multifunctional features, serving as a supporting system, light fixing plant, lighting, and water pipe system for microclimate control and other related features.

SITE 4 - PROPOSED NEW SITTING-OUT AREA ON GRADE AT YIP HING STREET AND ADJOINING STAIRCASE

The design aims to improve the pedestrian experience with public furniture, integrated walkways, and enhanced recreational landscape spaces between urban and rural building areas. The materials provide multifunctional features, serving as a supporting system, light fixing plant, lighting, and water pipe system for microclimate control and other related features.



Wong Chuk Commons

By connecting Wong Chuk Hang MTR station to Aberdeen Country Park, Wong Chuk Commons proposes to integrate nature into the city while simultaneously engaging and celebrating the industrial and artistic development of the district.



The Commons (Site 1)

Concept Diagram

Engaging nature into the city and city into nature.



Design Strategy

To work as a platform for Wong Chuk Hang's creative professionals, and create an environment highly suitable for Hong Kong's contemporary lifestyle.



Plant Species

Required species of Aberdeen Country Park compatible with Wong Chuk Hang, which are all listed in the table below.



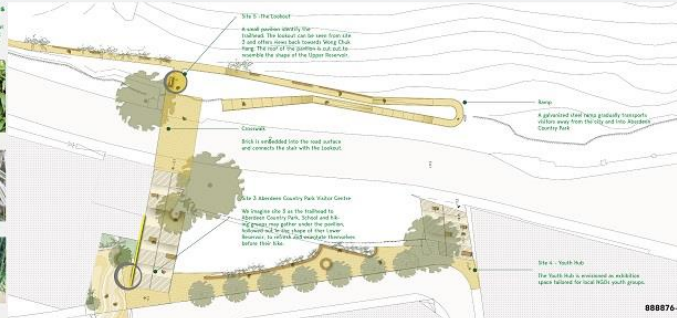
Site History

Wong Chuk Hang and Aberdeen Country Park are historically linked since 1915 when the locality was the Shing Paper Mill connected to the Lower Aberdeen Reservoir.



Wayfinding

A consistent, recognizable system throughout.



888876-1



Commons City (Site 2)



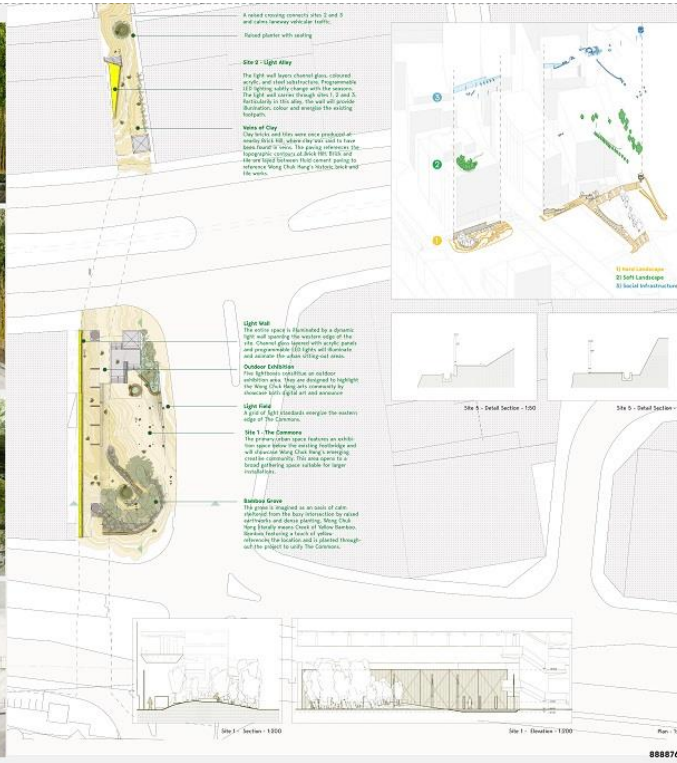
Light Alley (Site 2)



Country Park Visitor Centre (Site 1)



Commons City (Site 1)



888876-2