

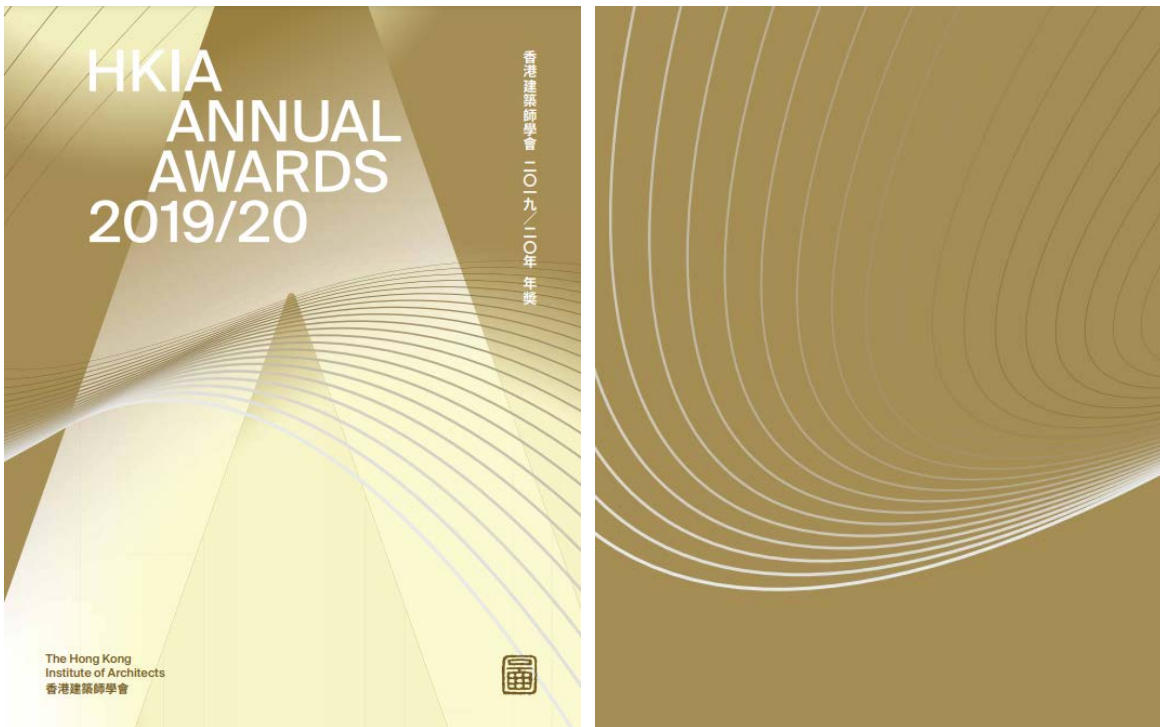


香港建築師學會
The Hong Kong Institute of Architects

extracted pages Appendix 4

HKIA Annual Awards 2019/20 Commemorative Publication
– extracted pages

Cover and back cover



Section of messages and introduction





香港建築師學會
The Hong Kong Institute of Architects

Appendix 4

HKIA Annual Awards 2019/20 Commemorative Publication – extracted pages

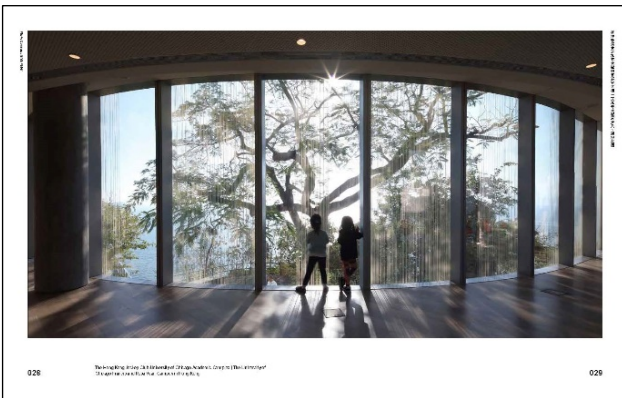
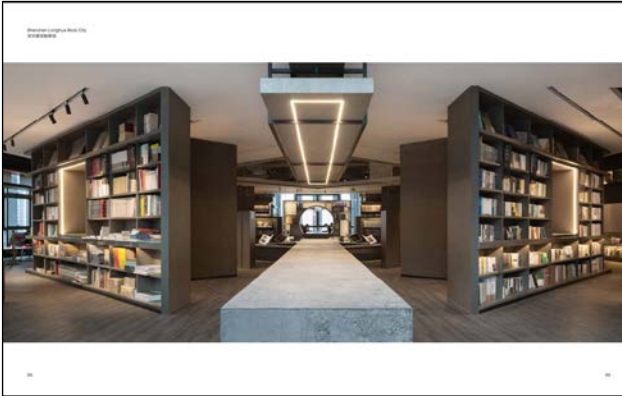
Section of Annual Awards awarded and finalist projects





香港建築師學會
The Hong Kong Institute of Architects

Section of Annual Awards awarded and finalist projects (cont')



020

020

030

031



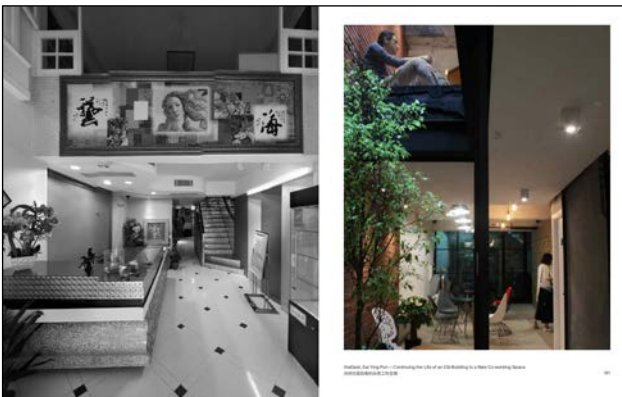
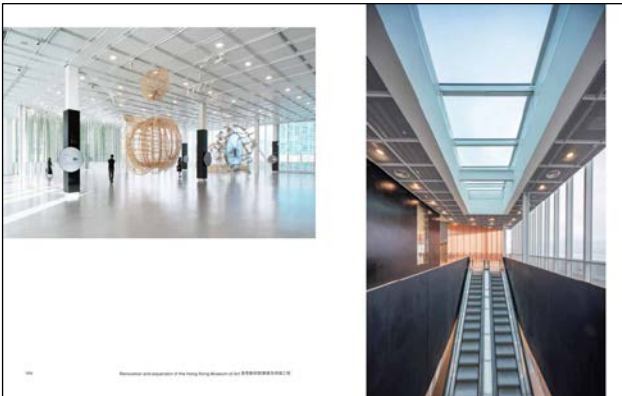
034

035



香港建築師學會
The Hong Kong Institute of Architects

Section of Annual Awards awarded and finalist projects (cont')





HKIA Annual Awards 2019/20 Commemorative Publication – extracted pages

Section of Young Architect Award

THE FUTURE OF AFFORDABLE HOUSING?

THE FUTURE OF AFFORDABLE HOUSING? 2019 Young Architect Award Winner

明日的可負擔房屋?

Needs that we as architects have to address public housing is not limited to providing housing. We are not just providing shelter, we are providing a place for people to live, to work, to play, to learn, to grow, to connect, to belong. We are providing a place for people to live, to work, to play, to learn, to grow, to connect, to belong. We are providing a place for people to live, to work, to play, to learn, to grow, to connect, to belong.

Mr. Alex KWONG 龔心怡建築師
Ms. Josephine WU 吳嘉敏建築師
Dr. Raymond WAI 衛志強建築師
Ms. Mei CHIU 趙美儀建築師
Ms. Tony IP 葉文文建築師

Modular & Inter-generational Community – An Interplay of the Air and the Land

2019 Young Architect Award Winner

Modular & Inter-generational Community – An Interplay of the Air and the Land

Through its design, the project is intended to provide a new model for affordable housing. It is a model that is not just about providing shelter, but about providing a place for people to live, to work, to play, to learn, to grow, to connect, to belong. It is a model that is not just about providing shelter, but about providing a place for people to live, to work, to play, to learn, to grow, to connect, to belong.

Modular & Inter-generational Community

Modular & Inter-generational Community

Residential Unit
Single Unit
Self-Catering Unit
Special Unit
Library Unit
Catering & Shop Unit

SOCIAL VALLEY

SOCIAL VALLEY

Through its design, the project is intended to provide a new model for affordable housing. It is a model that is not just about providing shelter, but about providing a place for people to live, to work, to play, to learn, to grow, to connect, to belong. It is a model that is not just about providing shelter, but about providing a place for people to live, to work, to play, to learn, to grow, to connect, to belong.

Rediscovering our Harbour

Rediscovering our Harbour

Hung Hom – Arts + Sports

Overall Project Budget	2.00
Phase 1 (Arts + Sports)	1.00
Phase 2 (Arts + Sports)	1.00
Phase 3 (Arts + Sports)	1.00
Phase 4 (Arts + Sports)	1.00
Phase 5 (Arts + Sports)	1.00
Phase 6 (Arts + Sports)	1.00
Phase 7 (Arts + Sports)	1.00
Phase 8 (Arts + Sports)	1.00
Phase 9 (Arts + Sports)	1.00
Phase 10 (Arts + Sports)	1.00

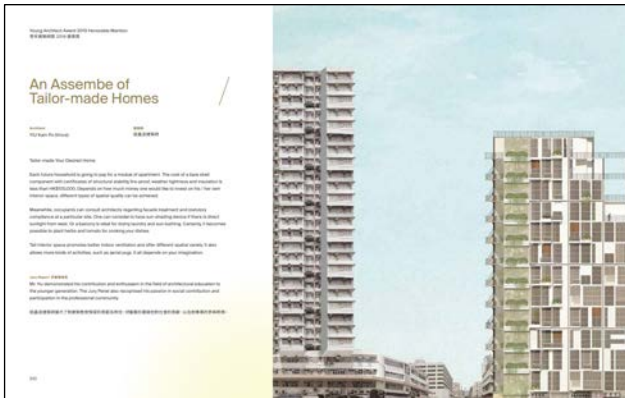
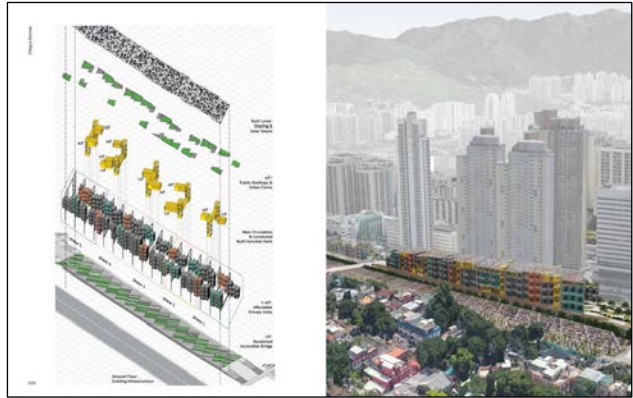
Hung Hom Sports + Recreation Centre

Hung Hom Sports + Recreation Centre

Through its design, the project is intended to provide a new model for affordable housing. It is a model that is not just about providing shelter, but about providing a place for people to live, to work, to play, to learn, to grow, to connect, to belong. It is a model that is not just about providing shelter, but about providing a place for people to live, to work, to play, to learn, to grow, to connect, to belong.



香港建築師學會
The Hong Kong Institute of Architects





香港建築師學會
The Hong Kong Institute of Architects

Appendix 4

HKIA Annual Awards 2019/20 Commemorative Publication – extracted pages

Section of exhibition snapshots





香港建築師學會
The Hong Kong Institute of Architects

Appendix 4

HKIA Annual Awards 2019/20 Commemorative Publication
– extracted pages

Section of project credits

This table lists the winners of the HKIA Award of the Year for 2019/20. It includes the project name in both Chinese and English, the award category, and the names of the architects and their firms. The projects listed include the MTR West Kowloon Station, the new MTR West Kowloon Station, the new MTR West Kowloon Station, and the new MTR West Kowloon Station.

This table lists the winners of the HKIA Award of the Year for 2019/20. It includes the project name in both Chinese and English, the award category, and the names of the architects and their firms. The projects listed include the MTR West Kowloon Station, the new MTR West Kowloon Station, the new MTR West Kowloon Station, and the new MTR West Kowloon Station.