



# LO & PARTNERS ARCHITECTS & DEVELOPMENT CONSULTANTS LTD.

## 盧益榮建築師樓地產發展顧問有限公司

Prosperous Commercial Building,  
6/F,54-58 Jardine's Bazaar,  
Causeway Bay, Hong Kong.  
Tel: (852) 2577 5373  
Fax: (852) 2890 4988  
Email: lopartners@gmail.com



Perspective of Park Horizon, Zhuhai

### DIRECTOR

#### Larry Yick Wing Lo

*BArch (Houston),  
HKIA, AIA  
Authorized Person - Architect  
Registered Architect  
PRC Class 1 Registered Architect  
Qualification*

### KEY STAFF

#### Hugo A. Dadvias Jr.

*BS. Arch. (Philippines)  
Associate Director*

#### Paul Lau

*BArch  
Associate Director*

#### Liu Jianneng

*BArch  
Foshan University, China*

### COMPANY DATA

#### Established in 1992

Size of Company - 12  
Professional - 6  
Supporting Staff - 6

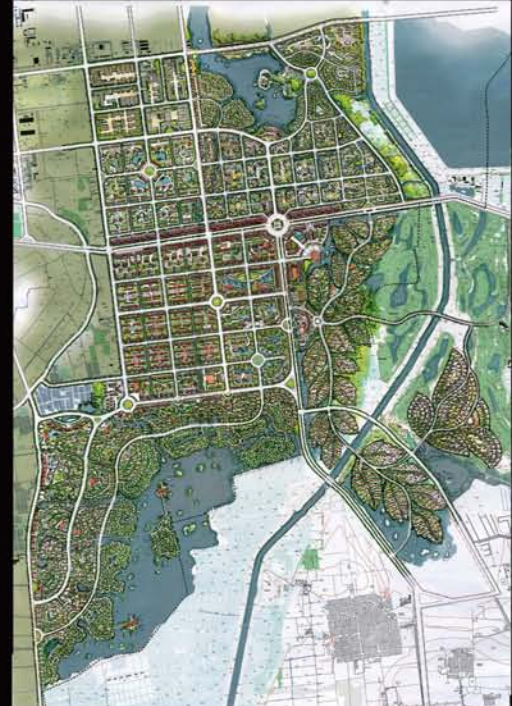
### COMPANY PROFILE

Lo & Partners Architects & Development Consultants Ltd. was established in 1992, offering quality professional services in architecture, planning, interior design and project management. We have completed a wide range of projects in Hong Kong and China, including prestigious residential developments, commercial / industrial buildings, hotels and clubhouse resorts.

Our commitment to serve our client with emphasis on personal attention and our zeal to strive for excellence in architecture have earned us a good reputation in the profession. Lo & Partners will continue to pursue for the enhancement and perfection in the quality of our design, both technically and aesthetically.



Victoria Bay, Zhuhai



Star City, Qingdao



Victoria Bay, Zhuhai



Victoria Bay, Zhuhai



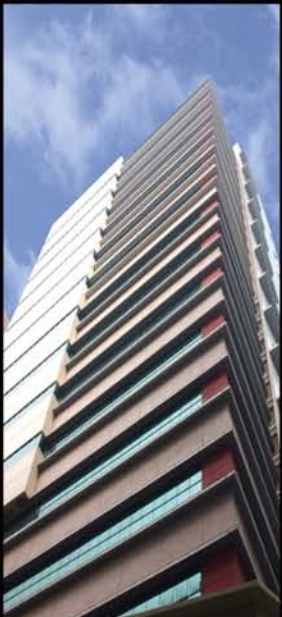
Victoria Bay, Zhuhai



Victoria Bay Sample flat, Zhuhai







Nanyang Brothers Tobacco Co., Ltd.  
Ho Tin Street, Tuen Mun, HK



Talon Tower, Connaught Road  
West, Sheung Wan, HK



Spectrum Tower, Hung To Road,  
Kwun Tong, HK



Kunming Communication Tower, Yunnan



Monte Rose, Zhuhai



映晖湾, Zhuhai



Park Horizon Master Development Plan, Zhuhai



Changzhou Central Business Development, Changzhou P.R.C.



骏文雅苑, Guangzhou



Yuxi



Qingdao



Lomond Lake Villa, Beijing



骏文雅苑, Guangzhou



骏文雅苑, Guangzhou





# LU TANG LAI ARCHITECTS LTD.

## 呂鄧黎建築師有限公司

2001, Chai Wan Industrial City Phase I, 60 Wing Tai Road, Chai Wan, Hong Kong.  
Tel: (852) 2521 0681 Fax: (852) 2524 3319 E-mail: info@ltlarch.com Website: www.ltlarch.com.hk

### DIRECTORS

#### Tang Man Kit, Joseph

BA (AS) (Hons) BArch (Dist)  
RIBA FHKIA PRC-C1RAQ  
AP (Architect) RA

#### Lai Siu Kin, Rembert

BA (AS) (Hons) BArch  
RIBA RAIA FHKIA PRC-C1RAQ  
AP (Architect) RA

#### Lu Wing Kwai, Steve

BArch (Syracuse)  
MS Arch (Hons) (Pennsylvania)  
RAIA SIA

#### Kwok Ka Fai

BA (AS) (Hons) BArch  
HKIA PRC-C1RAQ RA  
BEAM Professional

#### Chau Ho Ming

BArch (Hons) (HK)  
RHKIA

#### Associate Director

#### Choi Chun Yin, Kenny

BA (AS) (Hons) BArch  
HKIA RA

#### Associates

#### Ho Wong Wan Pui, Polly

BSc Dip Arch (UCL)  
HKIA RA

#### Tain M. Kirkwood

MA (Hons) Dip Arch  
RIBA HKIA RA

#### Fan Ka Wah, Nicholas

B SSc (Hons) M Arch  
HKIA ACIARB RA  
BEAM Professional

#### Architects

#### Lau Hon Chi, Johnson

BA (AS) BArch  
HKIA AP (Architect) RA

#### Wong Ming Tei, Edward

BA (AS) B Arch  
HKIA AP (Architect) RA  
BEAM Professional

#### Ng Yu Kui, Tommy

BA (AS) (Hons) BArch (Hons)  
(UNSW)  
HKIA RA

#### Chan Sheung Yue, Angle

BA (AS) (Hons) M Arch (Dist)  
HKIA RA  
BEAM Professional

#### Ng Kai Ming, Tony

BA (Arch) (Deakin U, AUST)  
B Arch (Hons) (Curtin U, AUST)  
HKIA RA

### COMPANY DATA

Established 1983

#### Size of Company

• Professional Staff 14  
• Supporting Staff 33

### SELECTED PROJECTS

#### Hong Kong Projects

- Jubilee Centre at 18 Fenwick Street, Wanchai, Hong Kong (1990)
- Crown Motors Pre-delivery Centre at Yuen Long, Yuen Long, N.T. Hong Kong (1998)
- Phase I & II Royal Green at 18 Ching Hiu Road, Sheung Shui, N.T., Hong Kong (2007)
- The Morrison at 28 Yat Sin Street, Wanchai, Hong Kong (2007)
- The Forest Hills at 97 Po Kong Village Road, Hong Kong (2008)
- Light-Industrial Development at 78 Hung To Road, Kwun Tong, Hong Kong (2008)
- The Pivot at 52 Hung To Road, Kwun Tong, Hong Kong (2008)
- Crowne Plaza at 8 Leighton Road, Hong Kong (2009)
- 8 Royal Green at Ching Hiu Road, Sheung Shui, N.T., Hong Kong (2009)
- Proposed Residential Development at 59 Mount Kellett Road, Hong Kong (2012)
- Proposed Residential Development at 72 Mount Kellett Road, Hong Kong (2012)
- Proposed Commercial and Residential Redevelopment at 13 Sze Shan Street, Yau Tong, Hong Kong (2013)
- Proposed Non-Polluting Industrial Development at 19-21 Wong Chuk Hang Road, Hong Kong (2013)
- Proposed Residential Development at 44 Stubbs Road, Hong Kong (2013)
- Proposed Residential Development at 48 Stubbs Road, Hong Kong (2013)
- Proposed Residential Development at 1-13 Kwai Heung Street, Hong Kong (2014)
- Proposed Redevelopment at No. 33 Wing Lung Road, Hang Hau, Sai Kung, NT, Hong Kong (2014)
- Proposed Industrial Building at Nos. 59-63 Wing Hong Street, 92 King Lam Street, Hong Kong (2014)

#### PRC Projects

- Shui On Plaza, Shanghai, China (1996)
- Master Plan for 40 hectares Residential Development, Rui Hong Xin Cheng, Hongkou, Shanghai, China (1996-2006)
- City Hotel Apartment, Shanghai, China (1999)
- Rui Hong Xin Cheng Phase I, Hongkou, Shanghai, China (1999)
- Shanghai Cannes, Xin Zhuang, Shanghai, China (2000)
- Century Metropolis, Zi Yang Lu, Xuhui, Shanghai, China (2001)
- Residential Development at Zhen Lang Road, Shanghai, China (2001)
- Westmin Plaza Phase I, Zhongshan Road, Guangzhou, China (2002)
- The Arcadia, Phase II, Shanghai, China (2002)
- Heng Bao Garden, Guangzhou MTR Line 1, Lot HR-2 Development, Guangzhou, China (2002)
- Rui Hong Xin Cheng Phase II, Hongkou, Shanghai, China (2006)
- Plaza Central, Chengdu, China (2006)
- The Centrepont, Yuexiu, Guangzhou, China (2008)
- The Riviera in Hualongqiao Area - Gateway Area (Phase - 1A), Chongqing, China (2008)
- Westmin Plaza Phase II, Zhongshan Road, Guangzhou, China (2008)
- Central Point, Hui Tong, Chengdu, China (2010)
- Rui Hong Xin Cheng Phase III, Hongkou, Shanghai, China (2011)
- Residential Development at Chang Le Lu, Shanghai, China (2012)



### COMPANY PROFILE / STATEMENT

Lu Tang Lai Architects Ltd. originated in 1983. Over the years, the practice maintains a steady growth in sizable architectural projects ranging from offices and commercial developments, hotels, service apartments, high-class residential developments, schools and institutional buildings to master planning in Hong Kong, Mainland China and S.E. Asia.

Realizing the rapid economic transformation and growth of China in the last decades of the twentieth century, Lu Tang Lai Architects Ltd. sought to contribute to the development and redevelopment in Mainland China by actively participating in innovative and award-winning architectural and environmental design projects as early as the mid eighties, focusing in Shanghai in the early nineties. The Shanghai office was put into operation in early 2002 to enhance competitiveness and broaden services from gaining local expertise.





- 1 CROWNE PLAZA  
LEIGHTON ROAD, HONG KONG
- 2 THE PIVOT  
52 HUNG TO ROAD, HONG KONG
- 3 LIGHT-INDUSTRIAL DEVELOPMENT  
78 HUNG TO ROAD, HONG KONG
- 4 DAH SING FINANCIAL CENTRE  
GLOUCESTER ROAD, HONG KONG
- 5 LUTHERAN ACADEMY  
A DIRECT SUBSIDY SCHEME SCHOOL  
YUEN LONG, HONG KONG
- 6 NGAU CHI WAN RECREATION GROUND  
WONG TAI SIN, HONG KONG
- 7 CROWN MOTORS PRE-DELIVERY CENTRE  
YUEN LONG, HONG KONG
- 8 PLAZA CENTRAL  
CHENGDU, CHINA
- 9 SHUI ON PLAZA  
SHANGHAI, CHINA
- 10 WESTMIN PLAZA  
GUANGZHOU, CHINA
- 11 CITY HOTEL APARTMENT  
SHANGHAI, CHINA
- 12 THE CENTREPOINT  
YUEXIU, GUANGZHOU, CHINA
- 13 CENTRAL POINT  
HUI TONG, CHENGDU, CHINA







- 14 RESIDENTIAL DEVELOPMENT  
44 STUBBS ROAD, HONG KONG
- 15 RESIDENTIAL DEVELOPMENT  
59 MOUNT KELLET ROAD, HONG KONG
- 16 8 ROYAL GREEN  
SHEUNG SHUI, HONG KONG
- 17 THE FOREST HILLS  
97 PO KONG VILLAGE ROAD, HONG KONG
- 18 THE MORRISON  
28 YAT SIN STREET, HONG KONG
- 19 CHAM SHAN MONASTERY  
CLEAR WATER BAY ROAD, HONG KONG
- 20 ROYAL GREEN  
SHEUNG SHUI, HONG KONG
- 21 THE ARCADIA, PHASE 2  
SHANGHAI, CHINA
- 22 THE RIVIERA IN HUALONGQIAO AREA  
GATEWAY AREA (PHASE 1A)  
CHONGQING, CHINA
- 23 CENTURY METROPOLIS  
XUHUI, SHANGHAI, CHINA
- 24-25 RUI HONG XIN CHENG, PHASE 2  
HONGKOU, SHANGHAI, CHINA







- 1-3 THE FOREST HILLS  
97 PO KONG VILLAGE ROAD, HONG KONG
- 4 LEXUS SERVICE CENTRE  
CAUSEWAY BAY, HONG KONG
- 5 RENOVATION OF HOUSE  
CASTLE PEAK BAY ROAD NT., HONG KONG
- 6 WONG MING HIM HALL, ST. PAUL'S COLLEGE  
69 BONHAM ROAD, HONG KONG
- 7 ENTRANCE LOBBY, CITY HOTEL  
SHANGHAI, CHINA
- 8 BANQUET HALL  
MACAU TOWER, MACAU
- 9-12 EDO JAPANESE RESTAURANT  
CITY OF DREAMS, MACAU
- 13 EDO JAPANESE RESTAURANT  
ONE CENTRAL, MACAU
- 14 TOEI DELIGHTS JAPANESE CUISINE & YAKINIKU  
LE ROYAL ARC, MACAU
- 15 CHINESE RESTAURANT  
MACAU TOWER, MACAU





# lwk&partners

a r c h i t e c t s



LWK & Partners is a Hong Kong-based architectural practice. Founded in 1986, LWK & Partners celebrates its 25th anniversary in 2011. With a workforce of over 300 employees in Hong Kong, China and Australia, LWK is committed to the pursuit of excellence in architectural design and aims to improve quality of living and lifestyle.

LWK provides services which include urban planning, commercial and mixed-use development, residential development, landscape consultancy and heritage conservation. Over the past 10 years, LWK has worked with the major developers and has completed over 100 projects, total GFA over 20 million sqm, in over 30 cities in PRC.

In the 21st century, LWK continues to strive for architectural excellence in the Asia Pacific and Middle East regions and at the same time, actively participate in various kinds of social responsibility programs to contribute to the society.

梁黃顛建築事務所成立於1986年，在過去25年一直以卓越的建築設計、創新的意念及環保的建築，為周邊地區建設和諧都市，提升環境及生活質素。

梁黃顛以香港為基地，並於中國及澳洲設有分公司，現僱有超過300名員工。服務範圍包括城市設計、綜合性發展、住宅發展、景觀設計及文化保育。在過去十年間，梁黃顛在中國的30個城市完成超過100個項目，總面積超過2,000萬平方呎。

在嶄新的廿一世紀，梁黃顛將繼續努力為亞太及中東地區提供全面的建築設計服務。同時，我們將積極參與公益活動，為社會作出更大的貢獻。



## HONG KONG

15/F, North Tower, World Finance Centre, Harbour City, Kowloon, Hong Kong  
 T: 852 - 2574 1633 F: 852 - 2572 4908  
 Email: lwk@lwkp.com

## SHENZHEN

21/F, Aerospace Skyscraper Building, 4019 ShenNan Road, FuTian District, Shenzhen, P.R.C. Postal Code: 518048  
 T: 86 - 755 - 82031633 F: 86 - 755 - 82031623  
 Email: lwkshz@lwkp.com.cn





城市設計及總體規劃：1. 重慶彈子石綜合發展項目 2. 佛山蘭石 3. 廣州亞運城 4. 山東海陽市丁字灣海上新城 5. 元朗和生園 綜合發展：6. 天津金茂國際廣場 7. 廣州太古匯 8. The ONE 9. 成都國際金融中心 10. 成都天府時代廣場

**Directors**

Ronald Liang	Managing Director
Ivan Fu	Director
Kenneth Lo	Director
Paul Ng	Director
David He	Director
Luke Ma	Director
Wang Jun You	Director

**Key Staff**

C M Lee	Director (Conservation)
Niki Lai	Director (Landscape)
Calvert Chan	Senior Associate
Dennis Chan	Senior Associate
Eric Ho	Senior Associate
Kyat Chan	Senior Associate
Lambert Ma	Senior Associate
Ricky Tsang	Senior Associate
Truman Chan	Senior Associate
William Cheung	Senior Associate
Allan Cheung	Associate
Carmen Wong	Associate
Clement Yee	Associate
Hui Kwan Kan	Associate
James Acuna	Associate
Rene V. Limbo	Associate
Robert Johnson	Associate
Ruben D. Despabiladeras	Associate
Tony Yau	Associate
Tuanmin Wu	Associate
William Chiu	Associate

**Company Data**

Established	1986
No. of Staff	
Hong Kong Office	135
- Qualified Architects	39
- HKIA Member	35
- Technical & Supporting Staff	96
China Offices	205

[www.lwkp.com](http://www.lwkp.com)

**SHENYANG**

Suite 908, Office Tower, L'Avenue, 10 Hui Gong Street, Shenhe District, Shenyang, P.R.C. Postal Code : 110013  
 T : 86 - 24 - 31973533 F : 86 - 24 - 31973622  
 Email : lwkshy@lwkp.com.cn

**CHENGDU**

Suite 2103, 21/F, East Plaza, No.11 Zhidong Road, Jinjiang District, Chengdu, P.R.C. Postal Code: 610000  
 Tel: 86-28-65552628 Fax: 86-28-65552629





## 香港

香港九龍尖沙咀海港城環球金融中心北座15樓  
 電話：852-2574 1633 傳真：852-2572 4908  
 電郵：lwk@lwkp.com

## 深圳

深圳市福田區深南中路4019號航天大廈21樓 郵編：518048  
 電話：86-755-8203 1633 傳真：86-755-8203 1623  
 電郵：lwkshz@lwkp.com.cn





6



1

豪宅：1.香港赫蘭道 2.觀瀾觀湖園 高層住宅：3.半山壹號 4.青島銀海一號 文化遺產保育：5.馬六甲古城 - 世界文化遺產 總體規劃 6.元明和生園



5

**Development Milestones**  
發展里程碑

**1986**  
LWK & Partners Established.  
梁黃顧建築事務所成立。

**2001**  
Subsidiary office set up in Shenzhen marked its entry into the PRC market.  
深圳設立分公司，正式投入中國市場。

**2004**  
Subsidiary office set up in Tianjin for entering the northern cities.  
天津設立分公司，進入中國北方城市。

**2006**  
Subsidiary office set up in Chengdu and involved in the city development of Western PRC.  
成都設立辦事處，參與西部大開發城市建設。

**2007**  
Landscape Division established for providing landscape consultancy service.  
成立景觀設計部門，提供全面的景觀顧問服務。

**2008**  
Subsidiary office set up in Shenyang for handling projects in the north east region.  
沈陽成立分公司，進入中國東北地區。

**2009**  
Acquired Shenzhen Yiheng Architects & Engineers Ltd., a local design institute in Shenzhen China, to consolidate our position in PRC.  
成功併購深圳壹恒建築設計有限公司，鞏固在內地的發展。  
Subsidiary office set up in Shanghai for handling projects in the Chang Jiang Delta area.  
上海成立分公司，進入長三角地區。

**2010**  
Conservation Division established for offering service in historical building conservation and cultural heritage management.  
成立文化保育部門，提供專業文化遺產保育及管理服務。

**2011**  
LWK marked its 25th anniversary.  
梁黃顧邁向輝煌25周年。

[www.lwkp.com](http://www.lwkp.com)

**瀋陽**

審陽市沈河區惠工街10號卓越大廈908室 郵編：110013  
電話：86-24-31973533 傳真：86-24-31973622  
電郵：lwksy@lwkp.com.cn

**成都**

成都市錦江區東大街紫東樓段11號  
東方廣場A座2103室 郵編：610000  
電話：86-28-65552628 傳真：86-28-65552629



# M MOSER ASSOCIATES



Nestle - Beijing

M Moser is a global firm specialising in the creation of workplace environments, corporate base buildings and campuses since 1981. With offices in 11 countries, M Moser is able to meet client business objectives through an integrated solutions approach which includes sustainable interior design, strategic workplace planning, project management, engineering, procurement and construction.



Nokia - Beijing



South African Tourism - New York

## KEY STAFF

### BEIJING

**Doris Wong**, Director and Head of Office  
**Vivian Zee**, Director, Deputy Head of Office  
**Willis Ng**, Director

### DELHI

**Dushyant Jain**, Director and Head of Office

### GUANGZHOU

**Wendy Leung**, Director and Head of Office  
**Jo Hoe**, Deputy Head of Guangzhou and Shenzhen Offices

### HONG KONG

**Moira Moser**, Chairman, AP-1, FHKIA, AIA, NCARB, ARB  
**John Sellery**, Group Managing Director and Head of Office, AIA  
**Cecilia Wang**, Director  
**Daniel Leung**, Director, M Moser Technology  
**Eric Legere**, Director, Strategic Planning  
**Karen Ng**, Director  
**Wendy Leung**, Director  
**Wing Leung**, Director  
**Anthony Spurlock**, Director

### KUALA LUMPUR

**Adrian Symons**, Director and Head of Office

### LONDON

**Charlie Millard**, Director and Head of Office  
**Edmund Caddy III**, Director of Design, International

### NEW YORK

**David Weinberg**, Director and Head of Office  
**Bill Bouchey**, Director, IIDA  
**Robert Ma**, Director, US-China Liaison & International Sustainability Leader, AIA, LEED AP

### SHANGHAI

**Dick Mak**, Group Managing Director  
**Brian Pilley**, Director, Deputy Head of China and Head of Office, RIBA  
**Cynthia Chan**, Director  
**Gilbert Lo**, Director

### SHENZHEN

**Wendy Leung**, Director and Head of Office  
**Jo Hoe**, Deputy Head of Guangzhou and Shenzhen Offices

### SINGAPORE

**Stephen Lyon**, Director, Regional and Head of Office  
**Adam Mundy**, Director of Design, International  
**Steve Louie**, Director  
**Nicholas Schifferle**, Associate Director

### TAIPEI

**Norman Yang**, Director and Head of Office, AIA

## COMPANY DATA

**Established**  
1981

**Size of company**  
600+ staff

**Global Offices**  
11

**Address**  
14/F North Somerset House  
Taikoo Place, 979 King's Road  
Quarry Bay, Hong Kong

**T**: +852 2806 1373  
**F**: +852 2806 1403

**E**: [global-enquiry@mmoser.com](mailto:global-enquiry@mmoser.com)  
**W**: [www.mmoser.com](http://www.mmoser.com)



Halcrow - London





QuintiQ- Kuala Lumpur

BEIJING • DELHI • GUANGZHOU • HONG KONG • KUALA LUMPUR  
LONDON • NEW YORK • SHANGHAI • SHENZHEN • SINGAPORE • TAIPEI

# GLOBAL CLIENTS



CIMB - Kuala Lumpur



TCC - Hong Kong



Hitachi - London



Societe Generale - Hong Kong



Natixis - London



- ABN-AMRO Bank
- Adidas
- Agilent Technologies
- Allied Irish Bank
- AstraZeneca
- AXA
- Bain & Co
- Bain & Company
- Bank of New York Mellon
- Bank of Tokyo-Mitsubishi UFJ
- BEA Systems
- Bloomberg L.P.
- BNP Paribas
- BP
- Bristol-Myers Squibb
- Broadcom
- CALYON
- Cathay Pacific
- China International Capital Corporation
- CIGNA Worldwide Insurance
- Cisco Systems
- Clifford Chance
- Coca-Cola
- Credit Suisse
- D. E. Shaw
- DBS Bank
- Deutsche Bank
- DLA Piper
- DuPont
- eBay
- EFG Private Banking
- Ellerston Capital
- Ernst & Young
- Exxon Mobil
- Federal Express
- France Telecom
- GlaxoSmithKline
- Hewlett-Packard
- IBM
- John Swire & Sons
- Kohlberg Kravis Roberts & Company
- Latham & Watkins
- Lloyd's of London
- Macquarie
- Maersk
- Manulife
- McCann-Erickson
- Mead Johnson
- Mercedes-Benz
- Merck Sharp & Dohme
- Microsoft
- Natixis Bank
- New York Life
- Nokia
- Nokia Siemens Networks
- Nomura
- Ogilvy & Mather
- OMD
- O'Melveny & Myers LLP
- Pfizer
- Polo Ralph Lauren
- PricewaterhouseCoopers
- Qualcomm
- RBS
- Roche Diagnostics
- Siemens
- Skadden, Arps, Slate, Meagher & Flom
- Societe Generale
- Standard Chartered Bank
- State Street Bank
- Sun Life
- S.W.I.F.T.
- Swire Properties
- Swiss Re
- TPG-Axon Capital
- Wachovia
- Walt Disney
- Wilkhahn



# madison asia

Suite 1501, Chinachem Leighton Plaza  
29 Leighton Road, Causeway Bay  
Hong Kong  
TEL : (852) 2570 2287  
FAX : (852) 2570 2272  
E-MAIL : mal@madisonasia.com  
WEBSITE : www.madisonasia.com

## COMPANY PROFILE

Madison Asia Limited (MAL) was established in 1998 specifically to provide professional services on building and interior projects. MAL brings trust and confidence to its clients. The scope of services provided included architectural & interior design, project management, Authorized Person, pre-lease service, building services engineer, structural engineer, procurement and construction.

### DIRECTORS

Kwok Chung sum, Sum  
MBA HKIA RIBA ACI/Arb  
Registered Architect  
Authorized Person  
MBA - La Chaire LVMH  
Diplôme ESSEC  
International Luxury Brand Management  
Ip PT, Paul  
HKIA RIBA  
Registered Architect  
Authorized Person

### KEY STAFF

Dorothy Chan  
Diploma in Interior & Environmental Design  
BA (Hons) Business Studies  
To Fong  
Commercial Design (Interior Architecture)  
Steve Fung  
BSc (Hons) Building Surveying  
David Lam  
BA Architecture  
Wendy Lam  
Diploma in Environmental Design  
Howard Lee  
BS Architecture  
Jack Leung  
BSc Civil Structural Engineering  
Peter Mak  
BEng (Hons) MSc MSc MBA CEng  
MHKIE MCIBSE MIET

### COMPANY DATA

Established 1998  
Professional Staff 15  
Supporting Staff 5

### SELECTED PROJECTS

- Morgan Stanley regional headquarters for the Asia Pacific Region, SHK ICC, Hong Kong
- Deutsche Bank regional headquarters for the Asia Pacific Region, SHK ICC, Hong Kong
- MTR Corporation Limited (Investment Properties)
  - Telford Plaza
  - Maritime Square
- Cartier
  - Elements, Hong Kong
  - Pacific Place, Hong Kong
  - HK International Airport, Hong Kong
  - Plaza Indonesia, Jakarta
  - Golden Dragon Department Store, Kunming
  - Bund 18, Shanghai
- Chaumet
  - Elements, Hong Kong
  - HK International Airport, Hong Kong
  - St. George's Building, Hong Kong
  - Macau DFS, Macau
  - Marina Bay Sands, Singapore
  - ION Orchard, Singapore
  - Hong Kong Plaza, Shanghai
  - The Peninsula, Shanghai
  - Heyli Plaza, Ningbo
  - Times Square, Chongqing
  - Starlight 88, Chongqing
  - Matro Plaza, Suzhou
  - Wangfujing Department Store, Taiyuan
  - Paragon Centre, Xiamen
  - Seibu Department Store, Citic Plaza, Shenzhen
  - Furama Hotel, Dalian
  - International Finance Center, Guangzhou
  - Maison Mode Lessin Department Store, Chengdu
  - Hsensa Plaza, Tianjin
  - Charter Shopping Center, Shenyang
  - International Plaza Shopping Center, Wuhan
  - Charter Shopping Center, Harbin
- Zenith
  - Russell Street, Hong Kong
- TAGHeuer
  - Ocean Terminal, Hong Kong
- Hermes
  - Canton Road, Hong Kong
  - Hermes Office, Hong Kong
  - Lane Crawford, Hong Kong
  - Club Monaco
  - IFC, Hong Kong
  - Times Square, Hong Kong
- Juicy Couture
  - IFC, Hong Kong
- DFS Hong Kong Limited
  - Chinachem Golden Plaza, Hong Kong
  - Lippo Sun Plaza, Hong Kong
  - NAA-JDS Duty Free GM Store, Narita Airport
- Quiksilver
  - Pak Sha Road, Hong Kong
  - Graville Road, Hong Kong
- The Bank of East Asia, Limited
  - over 20 branches in Hong Kong
- Nanyang Commercial Bank
  - Queen's Road Central, Hong Kong
- DBS (HK) Limited
  - Consumer Banking Loan Centre, Hong Kong
  - Tai Po, Hong Kong
  - Cards and Unsecured Loans Office, Hong Kong
- Etemite Jewelry, Hong Kong
- METROPOLITAN Wine Cellar, Hong Kong
- Fandango Spanish Restaurant, Hong Kong
- Jockey Club Hong Chi Sui Sai Wan Workshop, Hong Kong
- Jockey Club Hong Chi Sun Chai Workshop, Hong Kong
- Hong Chi Wan Tau Tong Centre, Hong Kong
- Employees Retraining Board
  - Trade Square, Hong Kong
  - Sunlight Building, Hong Kong



The Bank of East Asia Hong Kong



Fandango Spanish Restaurant



Chaumet - Elements



Hermes - Canton Road



DFS Hong Kong



NAA JDS GM Store - Narita Airport, Japan



## SELECTED PROJECTS



Cartier - Elements



Juicy Couture - IFC Mall



TAGHeuer- Ocean Terminal



Salvatore Ferragamo - Narita Airport, Japan



Zenith - Russell Street



Emporio Armani - Narita Airport, Japan



Club Monaco - IFC Mall

## INTERNATIONAL PROJECTS



Cartier - Golden Dragon Department Store, Kunming



Chaumet - MBS, Singapore



Cartier - Plaza Indonesia, Jakarta



Cartier - Bund 18, Shanghai



Chaumet - Hisense, Tianjin



Chaumet - Charter, Shenyang



NAA JDS Boutiques - Narita Airport, Japan



Chaumet - ION Orchard, Singapore



Chaumet - Hong Kong Plaza, Shanghai



**MAP** - ADDING VALUE BY DESIGN

MAP has a reputation for design excellence. MAP is currently designing projects in Hong Kong, China, Vietnam, Thailand, Malaysia, Philippines, Cambodia, and the United Kingdom.

**MISSION STATEMENT**

MAP creates valuable, healthy, secure and sustainable buildings and cityscapes. MAP has the right people, knowledge and tools to create better design and through collaboration with strategic partners, help Clients and communities realise their visions.



**DIRECTORS**

**DAVID CLARKE**

HKIA | RAIA  
REGISTERED ARCHITECT  
HK | AUSTRALIA

**EDWARD BILLSON**

AP HKIA  
RAIA | RIBA | AIA  
REGISTERED ARCHITECT  
HK | AUSTRALIA

**KARL GREBSTAD**

HKIA | NAL  
REGISTERED ARCHITECT  
HK | UK | NORWAY

**KEY STAFF**

**HUDSON CHENG**

ASSOCIATE  
HKIA | AIA

**ROBERT LOCK**

ASSOCIATE

**TANG PING WAH**

ASSOCIATE  
HKIA

**CHAU CHARN PONG**

ARCHITECT

**JOAO VIEIRA COELHO**

ARCHITECT  
ARB MACAU & PORTUGAL

**VINCENT TSE**

ASSOCIATE  
RAIA

**COXON CHAN**

ARCHITECTURAL DESIGNER

**JOYCE CHENG**

ARCHITECTURAL DESIGNER

**STEPHANIE CHENG**

ARCHITECTURAL ASSISTANT

**RACHEL MA**

INTERIOR DESIGNER

**JOHNSON LEE**

INTERIOR DESIGNER

**NELSON LAU**

INTERIOR DESIGNER

2101 Asian House,  
1 Hennessy Road,  
Wanchai, Hong Kong  
TEL >> 852- 2877 9282  
FAX >> 852- 2877 9283

EMAIL >> map@maparchitecture.com

Web site >> http://www.maparchitecture.com



## CULTURE

MAP is committed to research and development as the key to imaginative design solutions. Our people are critical to this culture. The working environment is friendly and all of our staff work closely with the partners to learn and develop professionally resulting in the fulfillment of aspirations, enhanced knowledge and skill and resulting in a culture of excellence.

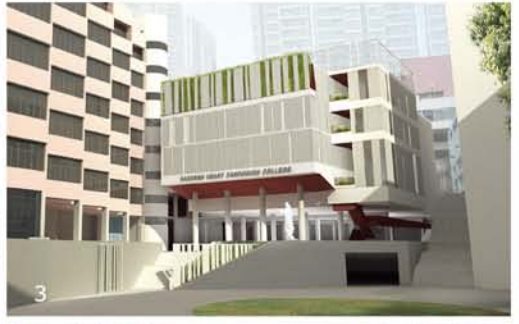
## VALUES

MAP recognizes that providing Architectural, Interior Design and Master Planning services relies on the people to deliver the services. To provide these services successfully we need bright motivated people in the team. Our core values of excellence, integrity, creativity, and diversity lead to a complete enjoyment of the process on the part of the service providers.



PROJECT	CLIENT	PROJECT	CLIENT
Kowloon Commerce Centre, Kwai Chung, HK	1-2 Sun Hung Kai Properties	Fung Shui Residential Development, Peak, HK	16 HSBC
Wenjun Distillery Redevelopment, Cheungdu	3-4 Moet Hennessy (LVMH)	Kai Ping Project, China	17 Guangzhou Yunjing Real Estate Co., Ltd.
Breakwater Restaurant, Dubai	5 Dubai Ventures Group	Huangshan Hilton Hotel, China	18-19 Yuanyi Group Co., Ltd.
Sino Plaza, Causeway Bay, HK	6 Sino Land	The HELP University, Malaysia	20 HELP University College
Royal Tower, Phnom Penh, Cambodia	7 Royal Group	Khao Rong Island, Cambodia	21-22 Royal Group
Hilton Double Tree Resort Hotel, Wuxi, Lingshan	8 Yuanyi Group Co., Ltd.	Chingari Luxury Villas, Thailand	23 Chingari (Phuket) Limited
One Harbour East, Kowloon Bay, HK	9 Sun Hung Kai Properties	Hard Rock Hotel & Retail Street, City of Dream, Macau	24-27 Melco Crown (COD) Developments Ltd.
The Avare, Kuala Lumpur, Malaysia	10 Embassy Court	Doan Ket Westlake Competition, Hanoi, Vietnam	28 JSC Project Management
Huangshan Sales Office, China	11-12 Yuanyi Group Co., Ltd.	Nha Be Apartments, District 7, Vietnam	29 Gia Viet Land Investment Co., Ltd.
Medan Airport, Indonesia	13 Trident Hill	Huawei Training Campus, Bangalore, India	30 Huawei Technology ShenZhen
Baan Rak Talay Private House Tower 5, Thailand	14 London Oil Trader		
Aqua 33, Pok Fu Lam, HK	15 Macauland Development Ltd.		





**Cultural & Amenity**



**Cinema/Hospitality/Retail**



**Exhibitions**

**Meta4 Design Forum Ltd.** architecture • planning • interiors

mdfa 建築師事務所

a: 9/F Flat B & D, Hyde Centre, 221-226 Gloucester Road, Wan Chai  
 t: 2872 5515 / 2872 5525  
 f: 2872 5575  
 e: mail@mdfa.net  
 w: www.mdfa.net

**Directors**  
 Anson W. C. Tsang  
 Kenneth K. W. Tse  
 Humphrey T. M. Wong  
 Steven K. Y. Chu

**Company Data**  
 Established 2002  
 HKIA Member 5  
 Size of firm 10

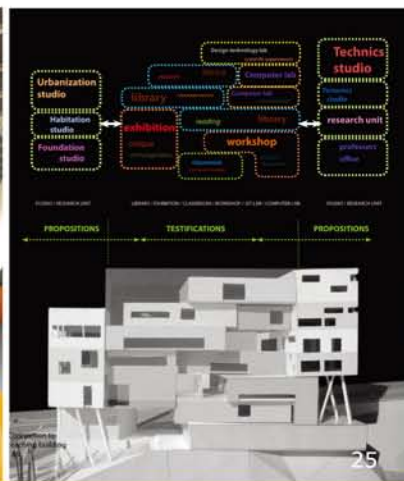




**Heritage Conservation & Adaptive Reuse**



**Winery**



**Institutions**

selected project list:

**Cultural & Amenity**

- 1 Youth Square (open competition 1st Prize 2000)
- 2 Jockey Club Creative Arts Centre (HKIA Medal Award 2008)
- 3 Sacred Heart Canossian College Extension, 2009
- 4 Sustainable Hostel at Pui-O, 2011 -

**Cinema/Hospitality/Commercial**

- 5-7 Boardway Cinematique, Yau Ma Tei, 2010 -
- 8 Shun Hing Plaza, Shenzhen, 2006

**Exhibitions**

- 9 Serviced Apartment, Sheung Wan, 2010 -
- 10 Link-Tin Shui Shopping Centre, Tin Shui Wai, 2011-
- 11-12 megARTstore (HKIA Special Interior Award, 2007)
- 13 Beautiful Journey, Beautiful World - an Art Container Project held in WKCD, 2007
- 14 Home Exhibition, Central Library, 2010

**Heritage Conservation & Adaptive Reuse**

- 15 Jao Tsung-I Academy - Revitalization of former Lai Chi Kok Hospital, 2010 -
- 16 Green Hub for Sustainable Living - Revitalization of former Tai Po Police Station, 2011 -
- 17 Viva Blue House, Blue House Cluster, 2010 -
- 18 Mei Ho House, 2009

**Winery**

- 19 Grace Vineyard Cellar, ShanXi, 2007
- 20 Grace Vineyard Extension, ShanXi, 2010 -
- 21 Terracotta Winery, Xian, 2009 -

**Institutions**

- 22-23 Hong Kong Design Institute, Tseung Kwan O, 2009
- 24 HKU Faculty of Architecture, 2006
- 25 CUHK Architectural School (Invited Competition), 2008
- 26 CUHK Main Library Extension (Invited Competition), 2008





Established in Hong Kong in 1985, the firm has been entrusted throughout the past twenty five years, with projects of all sizes, ranging from multi-billion developments to state-of-the-art private residences with clientele encompassing most of the esteemed developers in Hong Kong. The firm provides comprehensive architectural services both in Hong Kong and in China covering major cities including Shanghai, Chengdu, Dailan, Qingdao and Guangzhou and the spectrum of portfolio covers all types of buildings including residential, industrial, commercial, hotels and institutional buildings.

Celebrating our 20th Anniversary, Ma Leung & Associates (HK) Ltd rebrands as MLA Architects (HK) Ltd in 2006. We have been at the forefront of designs and concepts for more than 20 years. We are dedicated to providing quality service to meet clients' expectations. We invest in our people and develop their skills and potentials. We encourage new and innovative ideas and seek to create imaginative and sound design solutions for every commission. We are responsive to market trends and environmental changes. The launch of our new name marks our pledge and commitment to grow and advance with the vogue.

22/F ASIAN HOUSE  
NO.1 HENNESSY ROAD  
WANCHAI HONG KONG  
TEL: (852) 2529 7700  
FAX: (852) 2529 7688  
E-mail: mla@mla-architects.com  
Website: www.mla-architects.com

MLA ARCHITECTS (SHANGHAI) LTD  
中國上海市武寧路19號  
龍晶陽光大廈17樓1701室

**Residential Highrise**

- Island Resort in Siu Sai Wan
- 80 Robinson Road
- Tseung Kwan O Plaza
- The Cliveden in Route Twisk
- St George's Building at 81 Waterloo Road
- 9 College Road Kowloon Tong
- Baycrest in Ma On Shan
- Kwai Chung Phase 4
- Kwun Lung Lau Phase I
- The Cairn Hill 395 Tsuen Wan

**Residential Medium/Lowrise**

- The Vineyard, Yuen Long
- Palm Spring & Royal Palm in Wo Shang Wai, Yuen Long
- 23 Peak Road
- 8 Shiu Fai Terrace

**Office/Commercial/Retail**

- Kwun Tong View 410 Kwun Tong Road
- Saxon Tower in Lai Chi Kok
- NKIL 5925 at Wang Kwong Road Kowloon Bay
- No. 2 Heung Yip Road Wong Chuk Hang
- South Mart at Wong Chuk Hang

**Urban Renewal & Landscape**

- Kwun Tong Civic Hub
- HAD Minor Works Term Consultancy for Kowloon Region
- 363 District Open Space at Tung Chung
- Mouse Island Children Playground

**Industrial**

- 9 Wing Hong Street Cheung Sha Wan
- Cyber Centre in Ah Kung Ngam
- Billion Plaza in Cheung Sha Wan
- Topsall Plaza in Shatin Shek Mun

**Hotels**

- Ibis Hotel North Point
- Century Harbour Hotel Queen's Road West
- Boutique Hotel 202-206 Queen's Road Central
- Boutique Hotel 137 Connaught Road West

**China Projects**

- 上海世茂濱江花園
- 上海天安中心
- 廣州地下鐵道JY-2

**Prizes & Award**

- Quality Building Award 2008 Certificate of Merit (Residential) to Kwai Chung Phase 4
- Honourable Merit 2004 Sustainable design ArchSD projects To Mouse Island and children playground

**DIRECTORS**

- Ma Kim See**  
BA BArch  
FHKIA Registered Architect  
Authorized Person List 1
- Leung Sai Hung, Simon**  
BA BArch  
FHKIA Registered Architect  
Authorized Person List 1
- Yuen Tak Chuen**  
BA BArch  
MAIBC HKIA Registered Architect

**ASSOCIATES**

- Associate Director  
**Chan Sui Tung, Tony**  
BA BArch  
HKIA Registered Architect  
Authorized Person List 1
- Associates  
**Cheng Tsz Kwan, Justin**  
BA (Hons) MArch  
HKIA Registered Architect  
Authorized Person
- Cheung Wing Him, Edward**  
BA BArch MArch HKIA  
Registered Architect  
Authorized Person
- Wong Tak Chuen**  
BSc (Architecture)  
(University of Taiwan)
- Severino C. Garces Jr.**  
BS Arch (Philippines)
- Ng Kai Hung, Manfred**  
ACIOB HKIA Affiliate
- Chiu Kwok Leung, James**
- Wong Tak Wai, Derek**  
BSSc(AS) MArch HKIA  
Registered Architect

**ARCHITECTS**

- Lau Chun Yu**  
BA(AS) Dip in Arch HKIA  
Registered Architect
- Au Kin Bun, John**  
BA(AS) MArch HKIA  
Registered Architect  
Authorized Person
- Lee Wai Mun, Ellen**  
BBE(AS) BArch HKIA  
Registered Architect
- Wong Kar Sin, Una**  
BA(AS) MArch HKIA  
Registered Architect
- Chiu Chui Ying, Janus**  
BSSc(AS) MArch HKIA  
Registered Architect

**Staff Data**

Professional : 12  
Non-HKIA member: 8  
Support Staff: 46













# NagaConcepts

NagaConcepts (Asia) Ltd.  
Level 8, Exchange Square Two,  
8 Connaught Place, Central, Hong Kong  
Hong Kong S.A.R  
Tel: +852 2168 0853  
Fax: +852 2168 0899

NagaConcepts (Thailand) Co., Ltd.  
59/2 Ong Sim Phai Road, T. Taladyai  
A. Mueang, Phuket 83000, Thailand  
Tel: +66 76 219 892  
Fax: +66 76 219 893

[admin@nagaconcepts.com](mailto:admin@nagaconcepts.com)  
[www.nagaconcepts.com](http://www.nagaconcepts.com)

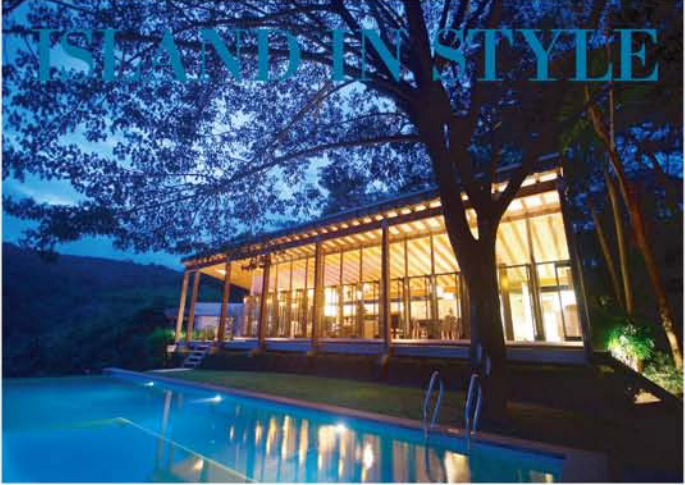
NagaConcepts (Asia) Limited





**OUR  
DRAMATIC  
DESIGN  
EMBRACES  
ALL THE DRAMA  
OF ITS  
INDIVIDUALLY  
UNIQUE  
SETTING**

This page shows images of luxury private residences, resort and sky pool villas in a Bangkok high-rise building and master plan of a resort & residential development for abproperties (New York) in the Caribbean.





# LIFE STYLE ARCHITECT

NagaConcepts





**Nelson Chen Architects Ltd**  
陳丙驊建築師有限公司



Hong Kong International School



St. Stephen's Society



St. Stephen's Society



Esquel Woven Manufacturing



Hong Kong International School

**Directors**

Principal Architect  
**Nelson K. Chen**  
BA(Hons) MArch(Dist) (Harvard)  
FHKIA FAIA RIBA HKICON AP (Architect)  
Registered Architect (US, HK)  
Hon. Professor (CUHK)

Associate Principals

**Eric F.C. Sau**  
Assoc. AIA  
**Ariel V. Santana**  
BSArch, UAP, Assoc. AIA  
Registered Architect (Phil)

Associates

**Lie Ning-Gung**  
BSc(AS) MArch (CUHK)  
HKIA AP (Architect) LEED AP  
Registered Architect (HK)  
PRC Class I RA Qualification

**Stanley C.H. Woo**  
BSc(AS) MArch (CUHK)  
HKIA AP (Architect)  
Registered Architect (HK)

**Contact Details**

23/F Lippo Leighton Tower  
103 Leighton Road Hong Kong  
T: (852) 2882 8086  
F: (852) 2882 8038  
E: architects@nca.com.hk

**Company Data**

Established : 1987  
Professional Staff : 8  
Technical / Support Staff : 10

**Company Profile**

It can be challenging for the concept of "small is beautiful" to succeed in modern architectural practice, perhaps especially in Hong Kong where contemporary urban development has been dominated by just a handful of large developers and their large consultancies, including architectural and engineering firms of commonly 200 or more staff. But, increasingly, clients are discovering that "small is the new big" for more attentive, professional service.

By design since its founding in 1987, Nelson Chen Architects Ltd. has faithfully committed to a studio-sized practice (within 20 staff) in order to focus intensely on selected projects while ensuring the highest level of design quality, attention to detail and personalized client service to each of these commissions, regardless of size.

Thus, for over twenty-five years, award-winning architect Nelson Chen and his associates have become identified with thoughtful and innovative designs at all scales -- from interiors up to garden housing communities -- and several building types -- from historic restorations to high-tech industrial parks -- as well as an uncompromising commitment to serve the needs of both their clients and community.

The work of Nelson Chen has been recognized by numerous publications, exhibitions and over 30 international design awards from the American Institute of Architects (AIA), Hong Kong Institute of Architects (HKIA), Interfaith Forum of Religious Art and Architecture (IFRAA) and UNESCO, among others. Nelson Chen Architects Ltd. received the inaugural Architecture Firm Award in 1999 from the AIA Hong Kong Chapter in recognition of "overall design achievement that exemplifies the highest standards of the architectural profession".





St. Andrew's Church



St. Andrew's Church



Methodist International Church



Hong Kong International School



Hong Kong Sanatorium and Hospital

### Selected Projects

Kowloon Motor Bus Office Headquarters, Kowloon	1989
Lafe Computer Magnetics Industrial Park, Panyu, Guangdong Province	1989
Lafe Technical College, Panyu, Guangdong Province	1989
Fairview Park Residential Development, Yuen Long	1990
Hong Lok Yuen Estates, Tai Po	1990
Hong Lok Yuen International School, Tai Po	1990
Silvermine Beach Hotel, Lantau Island	1992
Suzhou Garden Villas Development, Suzhou, Jiangsu Province	1995
Art Gallery and Academic Offices, University of Hong Kong	1996
Chung Chi College Dormitories, Chinese University of Hong Kong	1996
Crystal Knitters Industrial City, Dongguan, Guangdong Province	1996
Mattel Toys Industrial Park, Nanhai, Guangdong Province	1999
St. Andrew's Church and Vicarage Renovations, Kowloon	2001
Tao Fong Shan Christian Centre Renovations, Shatin	2001
Fairview Park Alliance Church, Yuen Long	2001
Fairview Park Country Club Extension, Yuen Long	2001
Community College of City University of Hong Kong, Kowloon Bay	2002
C.Y. Tung Maritime Museum, Shanghai	2002
General Electric China Technology Centre, Shanghai	2003
Mainetti China Industrial Parks, Shenzhen and Suzhou	2004
Hong Kong Golf Club, Caddiemaster and Clubhouse, Fanling	2005
Esquel Woven Manufacturing, Gaoming, Guangdong Province	2006
St. Stephen's Society, Treatment & Rehabilitation Centre, Shatin	2008
Hong Kong Sanatorium and Hospital Renovations, Happy Valley	2010
Logos Academy Secondary School Expansion, Tseung Kwan O	2011
Logos Academy Primary School Expansion, Tseung Kwan O	2013
HK International School Expansion, Repulse Bay and Tai Tam	2007-2013
St. Andrew's Church Expansion, Kowloon	2013
Methodist International Church Redevelopment, Wanchai	2013

### Selected Awards

Pacific Coast Builders Grand Award: Fairview Park	1992
AIA Chapter Honor Award: Hong Lok Yuen International School	1998
AIA Chapter Honor Award: Lafe Computer Magnetics Industrial Park	1998
AIA Chapter Honor Award: Chiu Yang Court Restaurant	1998
AIA Chapter Merit Award: KMB Office Headquarters	1998
AIA Chapter Merit Award: Mandarin Oriental Fine Arts	1998
AIA Regional Merit Award: Hong Lok Yuen International School	1999
AIA Regional Merit Award: Lafe Computer Magnetics Industrial Park	1999
AIA Chapter Honor Award: Meetinghouse Chapel	1999
AIA Chapter Merit Award: St. Andrew's Church	1999
AIA Chapter Architecture Firm Award: Nelson Chen Architects	1999
Hong Kong Artists Guild, Architect of the Year Award: Nelson Chen	1999
AIA Chapter Honor Award: Suzhou Garden Villas	2000
AIA Chapter Merit Award: Tao Fong Shan Christian Centre	2000
AIA Chapter Merit Award: University of Hong Kong Art Gallery	2001
IFRAA Religious Architecture Award: Tao Fong Shan Christian Centre	2002
AIA Regional Honor Award: Tao Fong Shan Christian Centre	2003
HKIA Award for Work Outside Hong Kong: C.Y. Tung Maritime Museum	2003
HKIA President's Prize: Fairview Park Alliance Church	2003
HKIA Architectural Award for Heritage: Tao Fong Shan Christian Centre	2004
HKIA Architectural Award for Heritage: St. Andrew's Church	2006
UNESCO Heritage Conservation Award: St. Andrew's Church	2006
AIA Chapter Merit Award: Hong Kong International School	2007
AIA Chapter Merit Award: Mainetti China Industrial Park	2007
AIA Chapter Merit Award: C.Y. Tung Maritime Museum	2009
AIA Regional Citation Award: Hong Kong International School	2009
QBA Certificate of Finalist: Hong Kong International School	2010
AIA Chapter Merit Award: Hong Kong International School Annex	2010
AIA Sustainable Design Award: Hong Kong International School Annex	2010





## P&T Architects and Engineers Ltd. 巴馬丹拿建築及工程師有限公司

33/F, 633 King's Road, North Point, Hong Kong  
香港北角英皇道633號33樓

Tel : 852-2575 6575 Fax : 852-2891 3834 E-Mail : ptaehk@p-t-group.com  
URL : http://www.p-t-group.com

HONG KONG 香港 • SINGAPORE 新加坡 • BANGKOK 曼谷 • VIETNAM 越南 • SHANGHAI 上海 •  
BEIJING 北京 • WUHAN 武漢 • DALIAN 大連 • MACAU 澳門 • DUBAI 杜拜 • ABU DHABI 阿布扎比 •  
AJMAN 阿治曼 • RAS AL KHAIMAH 哈伊馬角 • SANDI ARABIA 沙地阿拉伯



### DIRECTORS

**Remo Riva 李華武**  
Dipl. HBZ AGS BS

**Nicholas Burns 龐力**  
MA(Cantab) RIBA HKIA ARCUK MCIArb  
AP (Architect)  
Registered Architect

**Kenneth Lui 呂志堅**  
BArch HKIA ARAIA AP (Architect)  
Registered Architect

**Sern Vithespongse**  
BArch

**Bing Kwan 關秉暹**  
BSc(Arch) BArch HKIA  
AP (Architect)  
Registered Architect

**Dennis Tsang 曾國樑**  
CEng MStructE MIES MHKIE  
RPE RSE

**Chris Che 車季良**  
BA(AS)(Hons) BArch(Dist)  
B(Laws)(Hons) DLS HKIA  
RIBA AP (Architect)  
Registered Architect  
PRC Class 1 Registered Architect Qualification

**Janette Chan 陳韻明**  
BA(Arch)(Hons) MArch(Dist) HKIA  
ARAIA AP (Architect)  
Registered Architect

**Michael Lui 呂毓明**  
BArch AIA AHKIA CBAE(Calif)

**Henry Yip 葉慶霖**  
BEnvS MArch HKIA RIBA  
Registered Architect

**Jennifer Lee 李明嫻**  
BA(Arch)(Hons) DipArch HKIA  
AP (Architect)  
Registered Architect

**William Yuen 袁偉利**  
BSc(AS)(Hons) BArch(Dist)  
HKIA RIBA ARCUK  
Registered Architect

**James Abbott**  
BA(Arch)(Hons) BArch RIBA ARCUK

**Angus Chan 陳錦棠**  
BA(AS)(Hons) BArch HKIA  
AP (Architect)  
Registered Architect

**Ben Ip 葉維斌**  
BA(Arch)(Hons) Dip(Arch) MA(Arch)  
HKIA RIBA ARCUK  
Registered Architect  
PRC Class 1 Registered Architect Qualification

**Joel Chan 陳祖聲**  
BA(AS)(Hons) BArch(Dist)  
HKIA RIBA ARAIA AP (Architect)  
Registered Architect

**Li Ling C. 李凌璋**  
BSc(Arch) BArch(Hons) HKIA  
Registered Architect

**Julian C Smalley**  
AADipArch RIBA ARCUK  
AP (Architect)  
Registered Architect

**Clara Pang 彭素華**  
BSc(Arch) BArch(Hons) HKIA RIBA  
ARAIA AP (Architect)  
Registered Architect

**Johnathan Wong 黃中原**  
BArch(Toronto) HKIA  
Architects Association of Macau  
Registered Architect (Macau)

**Esther Chow 周婉茜**  
BA(AS)(Hons) BArch(Dist) HKIA  
RIBA ARAIA AP (Architect)  
Registered Architect

**Joseph W Y Lau 劉樂然**  
MSc(Civil & EnvE) BScEng  
MHKIE MStructE CEng RSE  
RPE(Struct) Class 1 RSE(PRC)

**Michael C K Chew 周志傑**  
BSc(Hons) BEcon MHKIE  
MIEAust MStructE CEng  
RSE RPE(Struct)

**Andrij Rostek**  
BArch RAIA  
Registered Architect  
(South Australia and Victoria)

**Joe Ng 吳小帆**  
BA(Arch)(Hons) BArch  
HKIA Registered Architect

**Zenith Chan 陳明耀**  
BA(AS)(Hons) BArch  
HKIA Registered Architect  
RIBA ARAIA AP (Architect)

### AWARDS

**Tseung Kwan O Sports Ground, Hong Kong**  
2010 Merit Award, HKSARG Architectural Services Department Annual Awards  
香港特別行政區建築署周年大獎優異獎

2010 Green Building Award - Merit Award 環保建築大獎 - 優異獎  
2010 Quality Building Award - Certificate of Finalist 優質建築大獎 - 入圍作品

**CEM Nape Substation, Macau**

2009 Honorable Mentions - Macau Architecture Awards

**Fusionopolis 2A, Singapore**

2009 Winner for Best Design & Master Planning Category - Cityscape Asia Real Estate Awards

**Kensington Krystal, Dubai**

2009 The Architecture Award, Commercial Categories, Arabian Property Awards

**Ajman Corniche Residence, Ajman**

2009 Best High-rise Architecture, Residential Categories, Arabian Property Awards

**10, 12, 16 & 18 Pollock's Path, Hong Kong 山頂普樂道10, 12, 16及18號**

2009 Asia Pacific Property Awards 2009 Best Architecture (Single Residence), Residential Categories

2007 HKIA Medal of the Year 香港建築師學會全年建築大獎

**No.3 Plunkett's Road, Hong Kong 山頂實吉道3號**

2009 Asia Pacific Property Awards 2009 - Best Architecture (Multiple Units), Residential Categories

**Jinan Hang Lung Plaza, Jinan 濟南恆隆廣場**

2009 Commended Project, Retail & Leisure section, MIPIM Architectural Review Future Project Awards 09

2009 Asia Pacific Property Awards 2009 Best Architecture, Commercial Categories

**Eight Park Avenue, Shanghai 上海靜安嘉裏苑**

2009 Asia Pacific Property Awards 2009 - Best High-rise Development, Residential Categories

**Caritas Lok Kan School, Hong Kong 明愛樂勤學校**

2009 Special Mention, HKSARG Architectural Services Department Annual Awards

2008 Special Architectural Award - Accessibility, The Hong Kong Institute of Architects Annual Awards - Hong Kong Institute of Architects (HKIA) 香港建築師學會主題建築獎 - 無障礙設計

**One North - Latitude, Singapore 維壹科技城**

2009 Asia Pacific Property Awards 2009 - Best Architecture (Multiple Units), Residential Categories

2009 Cityscape Awards Asia - Highly Commended for Best Urban Design & Master Planning Award

2006 JTC Sponsored Design Competition for new Housing in Biopolis

**The Riverine by The Park, Singapore 嘉濱軒**

2009 Asia Pacific Property Awards 2009 - Best High Rise Architecture, Residential Categories

2008 BCA Green Mark Award - Gold 新加坡建設局環保金項獎

**Mapletree Business City, Singapore**

2009 Asia Pacific Property Awards 2009 - Best Commercial Redevelopment, Commercial Categories

2009 BCA Green Mark Award - Platinum 新加坡建設局環保鉑項獎

2009 Cityscape Awards Asia - Highly Commended for Best Urban Design & Master Planning Award

**Beaumonde, Mumbai**

2009 Asia Pacific Property Awards 2009 - Best Architecture (Multiple Units), Residential Categories

2009 Asia Pacific Property Awards 2009 - Best High-rise Architecture, Residential Categories

2009 Asia Pacific Property Awards 2009 - Best High-rise Development, Residential Categories

**Vasant Lawns, Singapore**

2009 Asia Pacific Property Awards 2009 - Best High-rise Development, Residential Categories

**Jockey Club Creative Arts Centre, Hong Kong 賽馬會創意藝術中心**

2008 The Medal of Year of Hong Kong - Hong Kong Institute of Architects (HKIA)

香港建築師學會全年項內建築大獎

**Teem Plaza, Guangzhou 廣州天河城廣場**

2008 Guangzhou Best Design Award - 1st Grade Prize 廣州市優秀設計一等獎

**The Grandville, Hong Kong 晉名峰**

2008 Merit Award, Quality Building Award - Joint Organizing Committee of 9 prominent professional organizations 九個專業組織合辦2008年優質建築大獎住宅類別優異獎

**The Light @ Cairnhill, Singapore**

2008 Best Architecture (Multiple Units) Singapore - Asia Pacific Property Awards (CNBC)

**Kovan Melody, Singapore 嘉裕園**

2008 Best Architecture (Multiple Units) Singapore - Asia Pacific Property Awards (CNBC)

2005 Green Mark Award - Singapore Building and Construction Authority (BCA)

新加坡建設局環保成就獎

**The Empire Place, Bangkok**

2008 Thailand Best High-Rise Development - CNBC International Property Award

**The Park Chidom, Bangkok**

2008 Thailand Best High-Rise Development - CNBC International Property Award

**The Infinity, Bangkok**

2008 Best Condo Development (Bangkok) - Thailand Property Awards

**Shunde Library, Foshan China 佛山圖書館**

2007 American Institute of Architect & American Library Association Library Building Awards

美國建築師學會圖書館建築物獎

**SKH St. Mary's Church College and St. Andrew's Primary School**

香港聖公會聖安德烈小學及聖公會聖瑪利亞堂莫慶堯中學

2006 Hong Kong Institute of Architects Merit Award 香港建築師學會優異獎

**Shunde Performing Arts Center, Foshan China 順德演藝中心**

2006 Hong Kong Institute of Architects Merit Award 香港建築師學會優異獎

### COMPANY PROFILE

The P&T Group, formerly known as Palmer and Turner Hong Kong is probably the oldest and largest international architectural engineering practice in the South East Asia.

The Group now has over 1,700 staff and works from offices situated in Hong Kong, Macau, Singapore, Thailand, Malaysia, Taiwan, Vietnam, Shanghai, Beijing, Wuhan, Dalian, Dubai, Abu Dhabi, Ajman, Ras Al Khaimah and Sandi Arabia. Projects are carried out in these Asian and Middle Eastern countries as well as in the Philippines, India, Southern and Eastern Europe, New Zealand, Hawaii, America, and Canada, through associated practices.

We work to create the best quality building, and to provide the highest level of service to each and every project, to satisfy and exceed our clients' needs and expectations. We also believe in the responsibility of architecture beyond the building which includes a duty to society at large and respect for the culture and countries, cities and environments where we build.

巴馬丹拿集團可說是東南亞歷史最悠久、規模最龐大的建築及工程事務所，分別於香港、澳門、新加坡、越南、泰國、印尼、上海、北京、武漢、大連、台灣、杜拜、阿布扎比、阿治曼、哈伊馬角及沙地阿拉伯成立分區辦事處，僱用超過一千七百名員工，為各地工程提供全面的建築、結構及機械工程、城市規劃和項目監督等服務。集團也設有平面設計、模型製作及攝影等專業指導部門，為客戶提供更完備的顧問服務。

我們除了致力創建優質美觀的建築物及為客戶提供完善的服務外，我們亦配合發展的社會環境，為社區提供解決種種社區問題的方法，此方面的顧問服務在人煙稠密的社區更顯重要。

### COMPANY DATA

Established 1868

Total No. of Staff 1700



HONG KONG & MACAU  
香港及澳門





CHINA & OVERSEAS  
中國及海外



7



8



9



10



11





12



13



14



15



16



17



18



19

Hong Kong & Macau 香港及澳門

1. Tseung Kwan O Sports Ground 將軍澳運動場
2. Redevelopment of Victoria Park Swimming Pool Complex 維多利亞公園游泳池重建工程
3. The Joint User Complex and Wholesal Fish Market in Area 44, Tuen Mun 屯門第44區聯用綜合大樓及魚類批發市場
4. St. Paul Hospital 聖保祿醫院
5. Aria 峻弦
6. The Residencia, Macau 澳門 君悅灣

China & Overseas 中國及海外

7. Tianjin Polo Club 中國天津 馬球會
8. 117 Tower, Tianjin, China 中國天津 117大樓
9. Guangzhou Matsunichi Headquarters, China 中國廣州 松日總部大樓
10. World Trade Centre, Tianjin, China 中國天津 世界貿易中心
11. Dalian Tiandi Hekou Bay Mixed-Used Development, China 中國 大連天地河口灣綜合發展項目
12. Cintech 4 Building at Science Park, Singapore
13. Raheja Solaris Office Tower, Mumbai, India
14. Sky Ascentila, Singapore
15. The Crystal Palace, Tan Shui, Taiwan 台灣淡水 水立方
16. The Lumiere, Singapore
17. Park Ventures, Bangkok, Thailand
18. Burj Rafal, Riyadh, Kingdom of Saudi Arabia
19. Kensington Krystal, Dubai, UAE